



Quick Start Guide

Introduction:-

This quick start guide will help you to install MSR BudgetLine Software, configure data loggers and retrieve recorded readings from it

Requirements:-

To use MSR BudgetLine PDF USB data loggers & Software, you will require following items:

- MSR BudgetLine Software
- One or more data loggers

You can download PDF Software from:

https://drive.google.com/file/d/1f_FHfc9dyPmK_SKtvHdcDRT5rS7JA3qk/view?usp=sharing


Software Installation:-

Important Note: To install MSR BudgetLine Software, you will need to have Windows Administrator Access right on the PC you are using

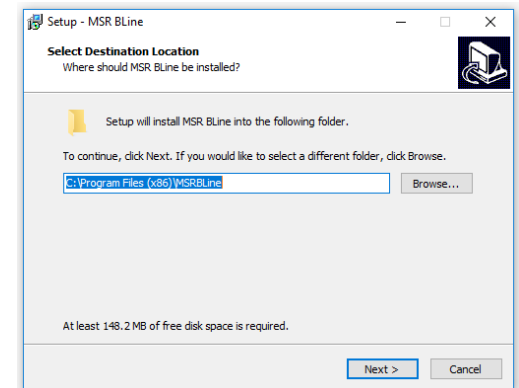
- Click on below link to download MSR BudgetLine Software:

https://drive.google.com/file/d/1f_FHfc9dyPmK_SKtvHdcDRT5rS7JA3qk/view?usp=sharing

- Double-click on **MSRBLine Setup.exe** to start window installer

Name	Date modified	Type	Size
 MSRBLine Setup	10-07-2019 12:42	Application	45,760 KB

- You will be asked to select destination location where you want to install the software (we recommend you use the default installation path). Once you have made your choices, click **Next**, then **Install**
- After successful completion of installation, click **Finish** and restart your computer

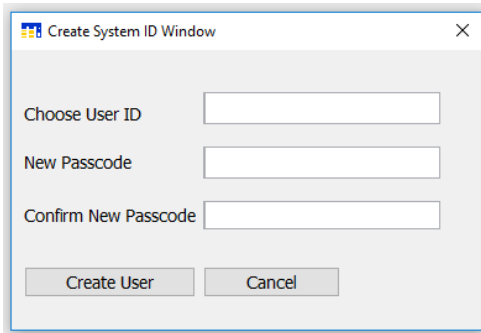


Starting MSR BLine Software:-

You can start the software by going to START >> All Programs >> MSR BLine >> MSR BLine



The first time you run software you will be prompted to create User ID & Passcode

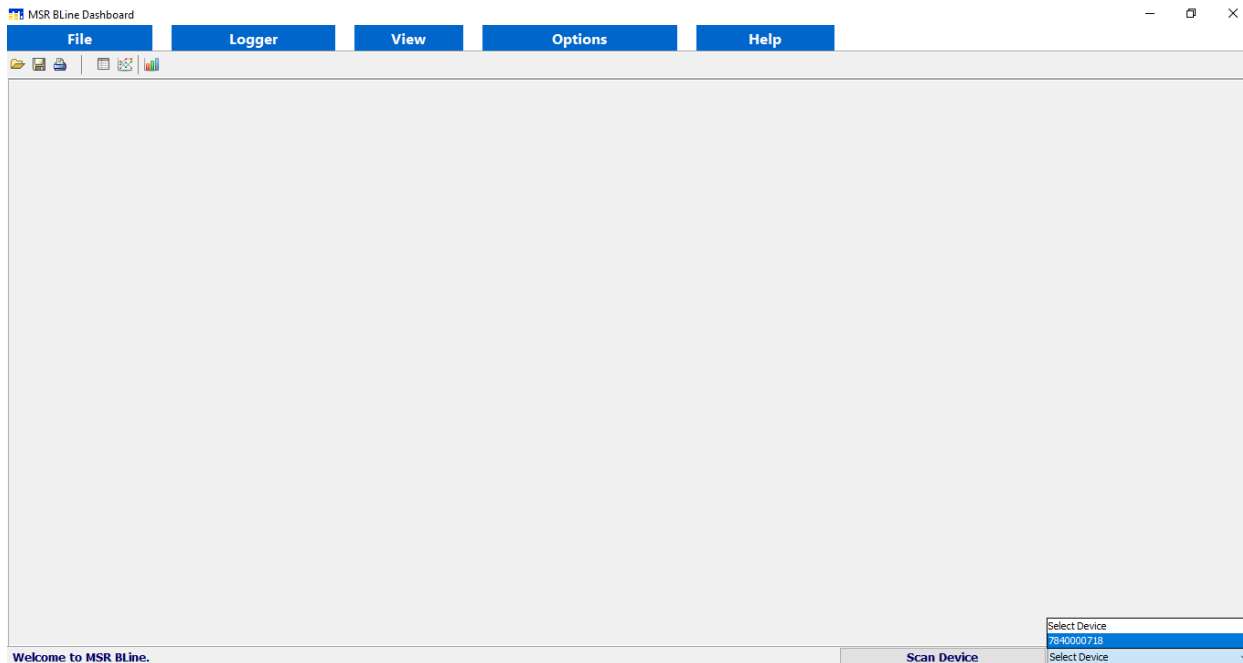


Connect Data Loggers:-

MSR BudgetLine PDF USB Loggers are available with integrated USB 2.0 A-Type plug. Hence, no additional hardware or cable is required to connect logger with PC

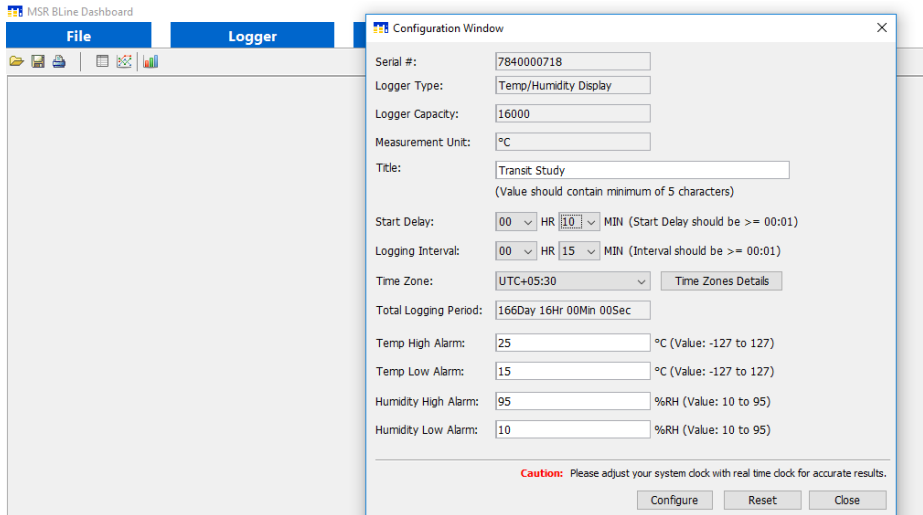
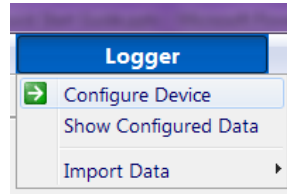
Note: Logger will be STOP automatically after 10 seconds when connected with PC. You can also STOP logger manually by pressing STOP button continuously for 5 seconds

Open MSR BLine Software, click on Scan Device > Select Device [serial number of logger you want to connect]

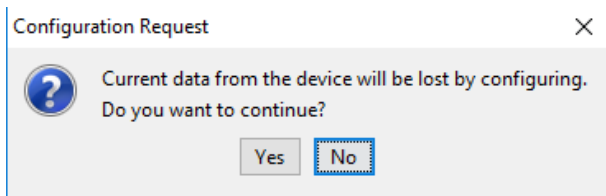


Configure Data Logger:-

Click on Logger > **Configure Device**



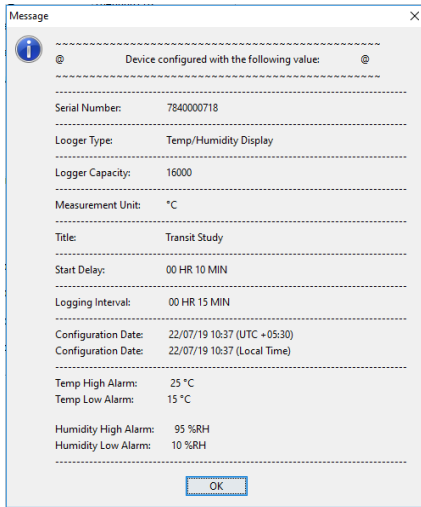
Enter Title, Start Delay Time, Logging Interval, Time Zone, High & Low Alarm Limits and click on **Configure**



By configuring logger; last recorded readings saved in its internal memory will be erased automatically. Click **Yes** to continue

Configure Data Logger:-

Message 'Device configured with following values' will be shown



Click OK and disconnect logger from the USB port of PC

On disconnecting logger, Green & Red LED will start flickering and at the end Green LED will be ON for a second indicating configuration of logger is completed successfully. .

To check configuration is completed successfully:-

Press 'START' button of logger for once; twice blink of Green LED indicate configuration is completed successfully

Logger with display will continuously indicate current reading only (START | STOP | RUN | OKAY will be Not Shown on Display)

Note:

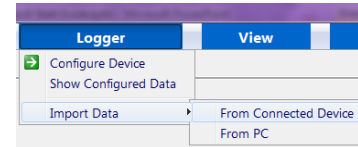
FailSafe Logging will be automatically started after the configuration of logger. This help receiver to get recorded readings from logger even if sender forget to press START button while activating logger

Import Recorded Data from Logger:-

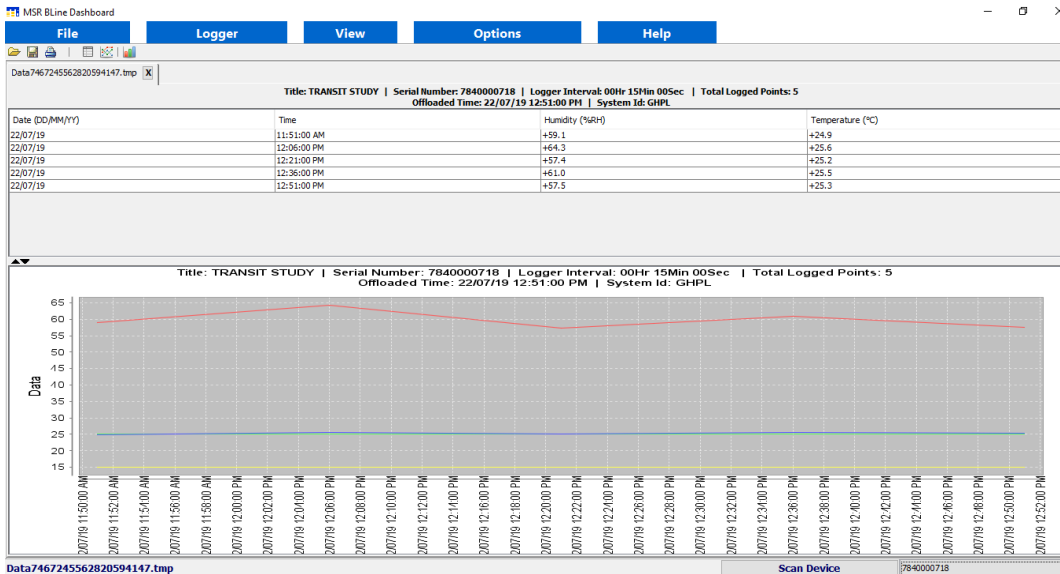
Connect logger with the USB Port of PC. If logger is in recording mode, it will be automatically STOP after 10 seconds when connected with PC

Open PDF Software, click on Scan Device > Select Device [serial number of logger you want to connect]

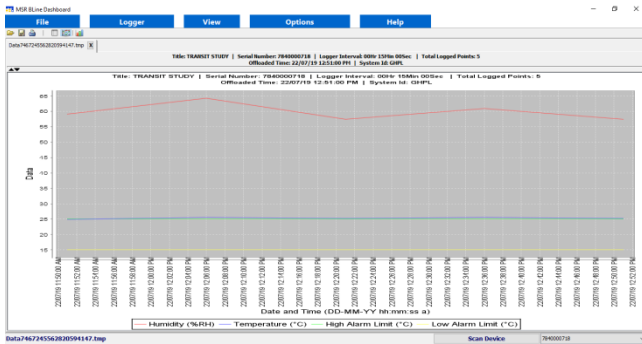
Click on Logger > Import Data > **From Connected Device**



Data is initially presented as a graph + table readings but can also be displayed as individual graph or table of readings if required. These views are supplemented with summary view and statistical view



Import Recorded Data from Logger:-
For Graphical view, Click on View > **Graph**



For Tabular view, Click on View > **Table**

The screenshot shows the MSR Line Dashboard with a tabular view of recorded data. The table has columns for Time, Humidity (%RH), and Temperature (°C). The data points are as follows:

Time	Humidity (%RH)	Temperature (°C)
22:07:19 11:51:00 AM	58.1	+24.4
22:07:19 12:04:00 PM	57.2	+24.4
22:07:19 12:17:00 PM	57.4	+25.2
22:07:19 12:30:00 PM	54.1	+24.3
22:07:19 12:43:00 PM	57.0	+25.3

For Summary view, Click on View > **Summary**

The Summary Data window displays the following information:

- Factory Configuration Date: 19/06/19
- Total Logged Points: 5
- Total Selected Points: 5
- Start After: 00Hr 10Min 00Sec
- Stop After: When Full
- Logger Configuration Date: 22/07/19 10:37:00 AM
- Offload Time: 22/07/19 12:51:00 PM
- System Id: GHPL

Humidity (%RH) statistics:

- Minimum Humidity: +57.4
- Maximum Humidity: +64.3
- Average Humidity: 59.9
- Standard Deviation of Humidity: 2.6

Temperature (°C) statistics:

- Minimum Temperature: +24.9
- Maximum Temperature: +25.6
- Average Temperature: 25.3
- Standard Deviation of Temperature: 0.2

Alarm and Kinetic data:

- Number of points below low alarm 15: 0 (Time: 00Hr 00Min 00Sec)
- Number of points above high alarm 25: 4 (Time: 01Hr 00Min 00Sec)
- Number of points within range: 1 (Time: 00Hr 15Min 00Sec)
- Mean Kinetic Temperature: 25.3

For Statistical view, Click on View > **Statistical**

The Statistical Data Selection dialog box allows users to choose the type of statistical data to calculate:

- Statistical data of full cycle
- Statistical data of partial cycle

Additional options include:

- Date From: [Dropdown]
- Date To: [Dropdown]
- Activation Energy H for MKT: [83.14472] kJ/mol (Value should be >= 60 and <= 100)
- Humidity lower limit: [Input]
- Humidity upper limit: [Input]
- Temperature lower limit: [Input]
- Temperature upper limit: [Input]

Buttons: Show Statistical Data, Cancel

The Statistical Data window displays the following calculated statistics:

Note: Date & Time format (DD-MM-YY hh:mm:ss a)

Title: TRANSIT STUDY | Serial Number: 784000718 | Logger Interval: 00Hr 15Min 00Sec | Total Logged Points: 5
Offloaded Time: 22/07/19 12:51:00 PM | System Id: GHPL

Statistical Data From: 22/07/19 11:51:00 AM To: 22/07/19 12:51:00 PM
Total Statistical Points: 5 | Total Time: 01Hr 15Min 00Sec

Humidity (%RH)

- Maximum Humidity: +64.3
- Minimum Humidity: +57.4
- Average Humidity: 59.9
- Standard Deviation of Humidity: 2.6
- Number of points for Humidity below lower limit 45: 0 (Time: 00Hr 00Min 00Sec)
- Number of points for Humidity above upper limit 60: 2 (Time: 00Hr 30Min 00Sec)
- Number of points for Humidity between 45 and 60: 3 (Time: 00Hr 45Min 00Sec)

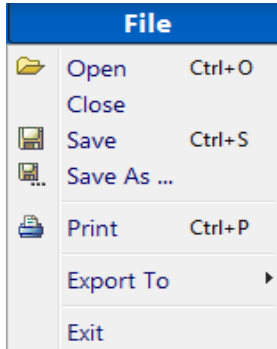
Temperature (°C)

- Maximum Temperature: +25.6
- Minimum Temperature: +24.9
- Average Temperature: 25.3
- Standard Deviation of Temperature: 0.2
- Mean Kinetic Temperature: 25.3
- Number of points for Temperature below lower limit 15: 0 (Time: 00Hr 00Min 00Sec)
- Number of points for Temperature above upper limit 25: 4 (Time: 01Hr 00Min 00Sec)
- Number of points for Temperature between 15 and 25: 1 (Time: 00Hr 15Min 00Sec)

Buttons: OK, Print

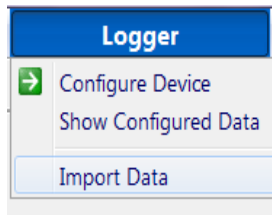
select time cycle and enter upper and lower limits for calculation and click **Show Statistical Data**

Menu Overview:-



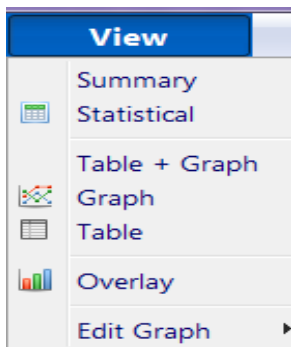
File

- Open: Open the save file from the local drive
- Close: Close the displayed file from the screen
- Save / Save As: To save the displayed file from the screen
- Export to PDF: To have a PDF report of offloaded data
- Export to Excel: To have a Excel file of offloaded data
- Print: To have a print copy of the content
- Exit: To close the Software



Logger

- Configure Device: To set parameters and start logger
- Show Configured Data: To view pre-programmed parameters of logger
- Import Data: From connected device (logger)
From PC (Open available .INR File)

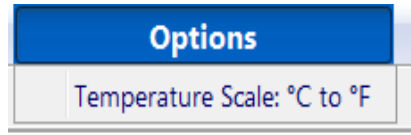


View

- Summary: To view summary report of data (Min./Max./Avg./MKT)
- Statistical: To set upper / lower limits and view statistical data
- Table + Graph: To view data in tabular + graphical format
- Graph: To view data in graphical format
- Table: To view data in tabular format
- Overlay: To overlay graphical view of different data
- Edit Graph: Add notes on Graph



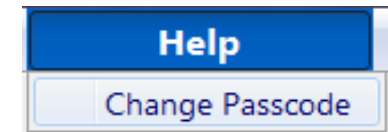
Menu Overview:-



Options

Temperature Scale °C to °F:

To change temperature scale from Centigrade to Fahrenheit



Help

Change Passcode:

To change passcode

Contact Us:-

Please, do not hesitate to communicate should you require any further information / assistance, we are placed entirely at your disposal for our services.

MSR Electronics GmbH

Mettlenstrasse 6

8472 Seuzach

Switzerland

T: +41 52 316 25 55

E: sales@msr.ch

W: www.msr.ch